

SUR 20

Ceiling mounted
SDCM<3 CRI>90

S20 . **15W** **090** **W** **IP20** **927**

Model Power Beam angle Body color IP grade CCT

Model
SUR

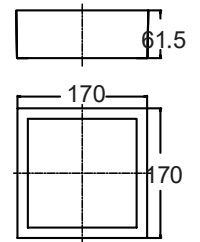
IP grade
IP20

Power
15W [W]
18W [W]

CCT
927 2700K
930 3000K
940 4000K
950 5000K

Beam angle
090 [°]

Body color
W White



Features

LED type	CREE
Color and CCT	2700K/3000K/4000K/5000K
Other colors	Upon request
Beam angle	90°

Performance

Max. delivered output	1400lm (15W) / 1800lm (18W)
Efficacy	93lm/W (15W) / 100lm/W (18W)

Electrical and control

Supply type	Main voltage (Integral LED driver)
Input voltage	AC240V
Max. power consumption	15W/18W
Dimming	Upon request

Physical

Cut out	N.A.
Housing material	Aluminium
Optics material	PMMA
Weight	-
Operating temperature	-25/+55°C

